

# Community Design Collaborative's New Approach to Collaboration

October 2011

Prepared by:



**OMG** Center for Collaborative Learning

Evaluation, Strategic Research & Planning, Philanthropy & Capacity Building

infll  
Philadelphia

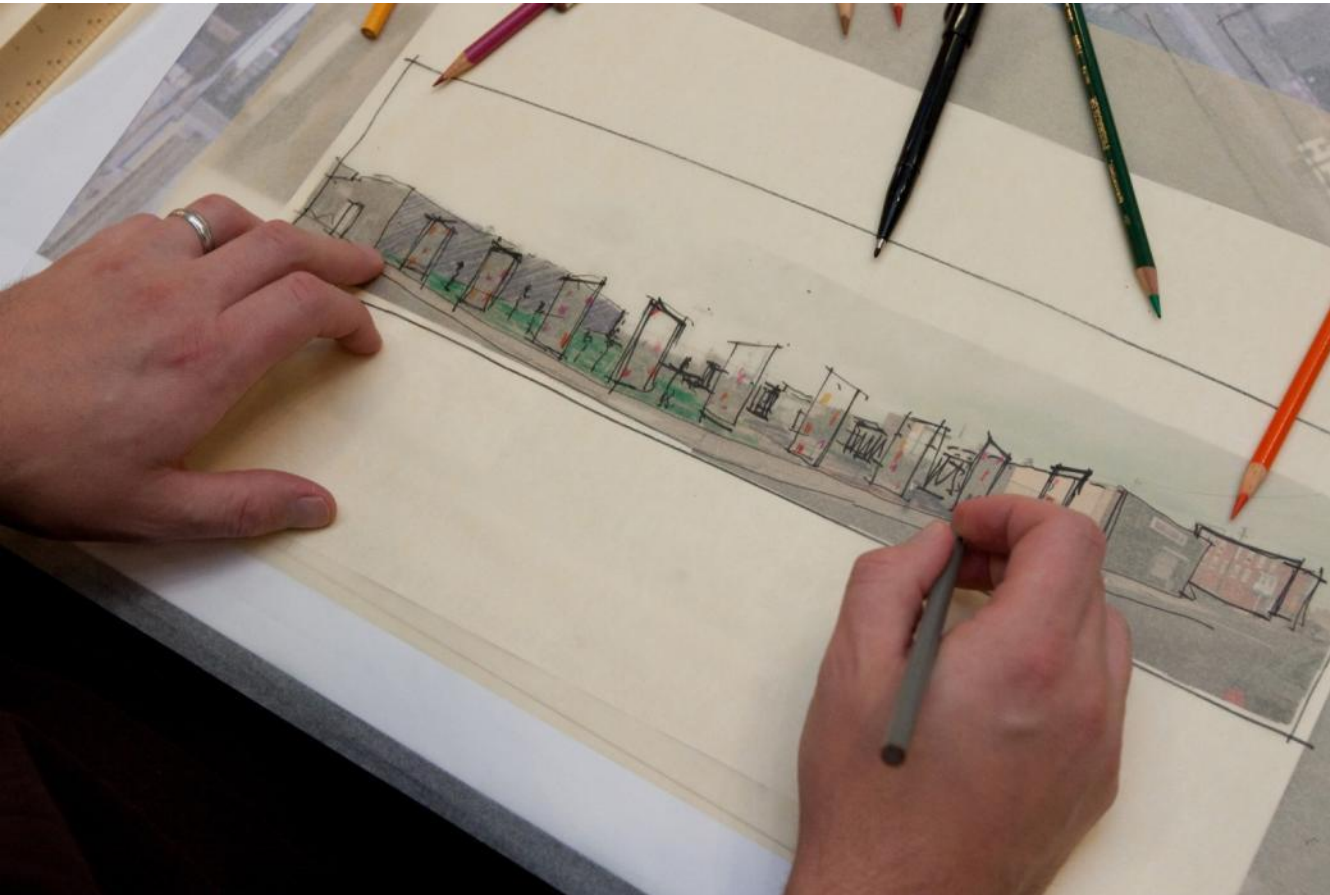


“We really broadened our circle beyond volunteers and clients. Now we have relationships with groups that wouldn’t have been here if it weren’t for *Infill*.”

- Collaborative Staff Member

“The goal of positioning the Collaborative as a thought leader?  
Mission accomplished.”

- Collaborative Board Member





“The designs were visionary, yet grounded in real-life user needs and site conditions.”

- Collaborative Board Member



“One of the things *Infill* did for me was open my eyes to the importance of design and what architects can do for us.”

- *Infill Philadelphia* Partner



“There’s still work to be done to position the Collaborative as the go-to on these issues.”

- Collaborative Board Member